

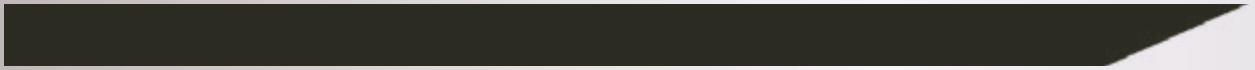


THE WHISKEY PROJECT GROUP



**TACTICAL WATERCRAFT.  
REDEFINED.**

# CONTROL THE ADVANTAGE



**The Whiskey Project Group is a recognized leader in combatant watercraft innovation, delivering a capability advantage to warfighters who risk their lives in the maritime environment.**

## **WHISKEY FAMILY OF TACTICAL WATERCRAFT**

**TWPG'S FAMILY OF MULTI-MISSION RECONNAISSANCE CRAFT — CONSISTING OF THE ALPHA (30FT) AND BRAVO (40FT) VARIANTS — REPRESENT THE MOST MEANINGFUL INNOVATION IN COMBATANT CRAFT IN DECADES.**

Foundationally supported by a shock-mitigating hull, WHISKEY watercraft integrate joint all-domain command and control (JADC2) systems — combining operationally focused features; unprecedented payload capacity and modularity; and future-proof networked technologies.

These purpose-built features provide unmatched operator safety, multi-mission adaptability, interoperability and lethality for low-visibility, managed-signature movement and operations in the littoral zone.

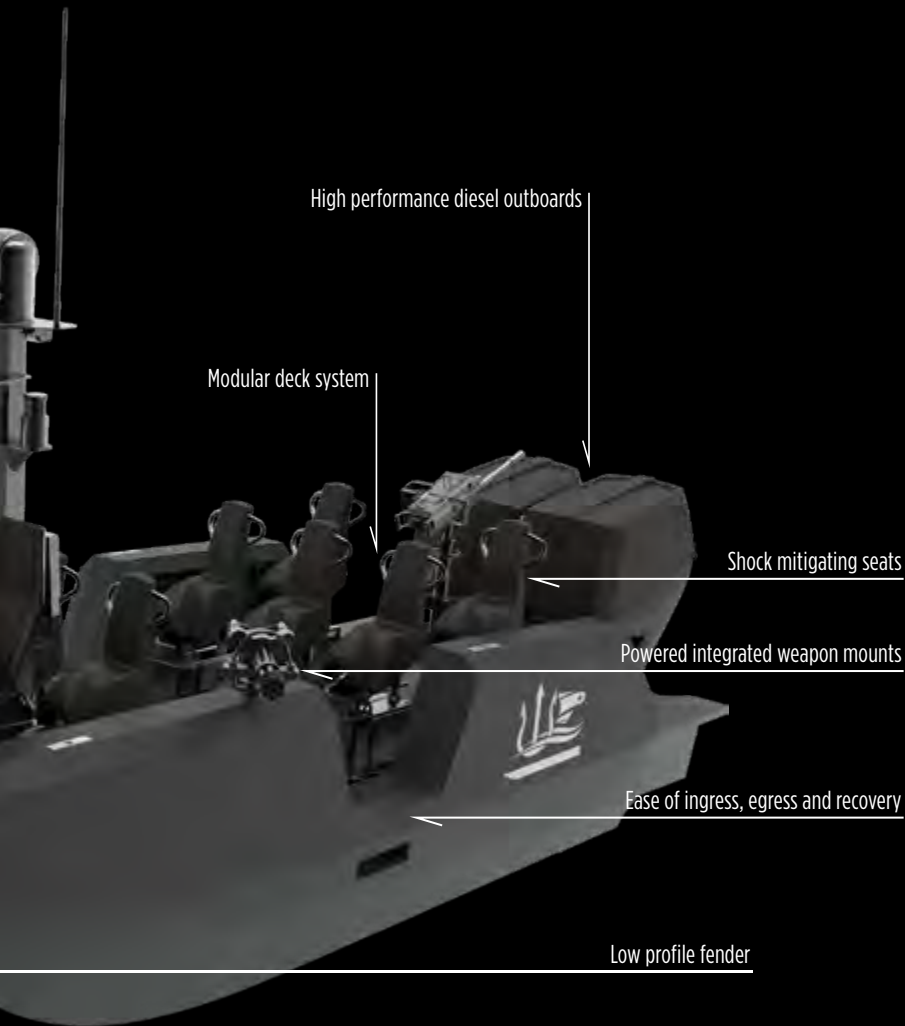
WHISKEY watercraft provide a competitive advantage to the warfighter, a capability advantage to the mission, and greater opportunity to control the advantage in the maritime battlespace.

Our focus is your advantage.

# WARFIGHTER ADVANTAGE



**INTEROPERABLE WITH NAVAL SHIPPING + AIR-TRANSPORTABLE + AIR-DROPPABLE + ROAD TRAILERABLE**



# WHISKEY

## *alpha*

- Length overall – 9.4 m (including outboards)
- Beam overall – 2.7 m
- Lightship weight – 3.6 t (including engines)
- Max displacement (survey compliant) – 5.8 t
- Draught max displacement – 0.7 m (full combat load)
- Pax/crew – 10
- Engines – 2 x 300 hp OXE diesel outboards – Jet or Propeller
- Fuel capacity – 800 L
- Range – +200 NM
- Hull form – Sea Blade Ultra Deep Vee
- Hull construction – Advanced carbon fiber composite
- Survey class – ISO12217-1-C10

Designed by warfighters for warfighters. WHISKEY watercraft are purpose-built to perform in the most challenging conditions, drawing on the veteran founders' operational experience of contemporary maritime and littoral warfare.

# WARFIGHTER ADVANTAGE

Modular deck system

Powered integrated weapon mounts

Ease of ingress, egress and recovery

Unprecedented length to payload capacity

Integrated signature reduction features

## TACTICAL WATERCRAFT. REDEFINED.

- Slam reduction hull form
- Increased directional stability
- Maximized sustained readiness
- Increased payload and modularity
- Exceptional speed and maneuverability

Whiskey watercraft are unique platforms offering projected stand-in force operational capabilities in a contested environment with increased emphasis on maneuver, enhanced communication suites, networked reconnaissance, all domain interoperability, and long-range strike capabilities.

Whiskey Horizon C5ISR sensor package



Advanced navigation system

Integrated ballistic protection

Removable weapon mounts fore and aft

# WHISKEY

## *bravo*

- Length overall – 11.9 m
- Beam overall – 3.5 m
- Lightship weight – 6.66 t
- Max displacement (survey compliant) – 10.16 t
- Draught max displacement – 0.89 m
- Pax/crew – 17
- Engines – 2 x 550 hp Cummins QSB 6.7 L
- Fuel capacity – 1600 L
- Range – +300 NM
- Hull form – Sea Blade
- Hull construction – Carbon fiber composite
- Survey class – IS012217-1-C17

- + Fully modular multi-role watercraft
- + Plug'n'Play technologies
- + Variety of payloads for greater interoperability

- + Advanced high-performance hull for greater stability and payload protection
- + Autonomous or optionally crewed capability
- + Purpose designed maritime platform to host C5ISREW-T



# A CAPABILITY ADVANTAGE

**Doctrine-centric design,  
with multi mission  
capability that is:**

**AFFORDABLE**

**ADAPTABLE**

**AVAILABLE**

**MAINTAINABLE**

**SUPPORTABLE**

**TRANSPORTABLE**

**INTEROPERABLE**

## **HUMAN PERFORMANCE ADVANTAGE**

- 40% reduction in shock load to personnel and equipment
- Navigation in GPS-denied environments
- Fit-for-purpose focus on threat reduction to platform and personnel
- Operator-machine interface reduces physical and cognitive loads
- Integrated weapon mounts and ballistic protection
- Optionally crewed and autonomy ready

## **MULTI MISSION MODULARITY**

- Multi mission configuration providing greater asset operational versatility
- Doctrinally-aligned design
- Single-source multi craft solution for off-the-shelf combat capability
- Integrated multi-mission hardware, controls & MCH/ATAK displays
- Networked 360 SA/ DVE driving aids
- Purpose built for the tactical edge

## **COST OF CAPABILITY**

- Built to USCG 46 CFR 170.150 & USCG 46 CFR 170.170, ISO 12217-1 Category C & B stability and DNVGL-ST-0342
- Most capable cost-effective combatant craft in history
- Lower total ownership cost and greater mean time between repairs
- Sustainable in the most challenging environments
- Relies mainly on unit-level service & maintenance





## ACCELERATING MARITIME TECHNOLOGY ADOPTION WITH US DIU

TWPG has been contracted by the United States Defense Innovation Unit to field and scale the WHISKEY family of watercraft for rapid adoption by US Marine Corps expeditionary forces.

The DIU is tasked with accelerating the adoption of commercial technology throughout the US military and strengthening allied and national security innovation bases. DIU partners with organizations across the US Department of Defense including combatant commands and defense agencies, to rapidly prototype and field

advanced commercial solutions that address national security challenges.

WHISKEY watercraft address the maritime technology step-change required to support the Marine Corps' new "Stand-in Forces" operating concept. SIF represent small, lethal, low signature, and mobile forces operating in the littoral zone, which are "simple to maintain and sustain, and "designed to operate across the competition continuum within a contested area as the leading edge of a maritime defense-in-depth".



## THE WHISKEY PROJECT GROUP

---

The Whiskey Project Group is a veteran-owned global maritime design and manufacturing business with teams located in the United States, Europe, Australia and New Zealand.

Backed by a trusted supply chain of highly-specialized marine technology partners, TWPG combines international naval special operations experience and decades of New Zealand maritime design excellence.

TWPG has proudly played a role in the design and manufacture of over 200 specialist watercraft, and is a contracted defense supplier across watercraft design, manufacturing and innovation projects.

## BEHIND THE BUSINESS

Named after the military callsign ‘whiskey’ for Australian Special Forces water operators, The Whiskey Project Group founders – former Australian Navy special operations clearance divers – set out to create “the watercraft we wish we’d had.”

## DARREN SCHUBACK

### Co-founder and CEO

USA: +1 (757) 861 2474 | AU: +61 409 999 734

[darren.schuback@thewhiskeyprojectgroup.com](mailto:darren.schuback@thewhiskeyprojectgroup.com)



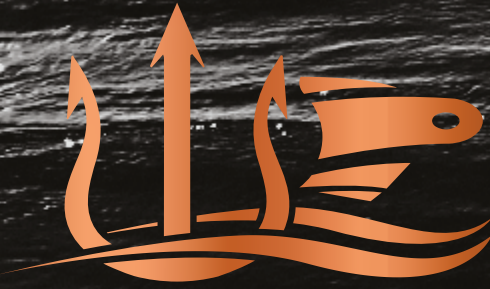
Darren Schuback is an Australian entrepreneur and award-winning CEO who founded The Whiskey Project Group in 2019 with the mission to create operator-focused watercraft that provide optimal performance and protection for those who risk their lives in the maritime environment. Darren is a former military officer with over 24 years of operational and leadership experience in the Royal Australian Navy and ADF Special Operations.

## RYAN CARMICHAEL

### Co-founder and COO



Ryan Carmichael is a former naval officer with more than 15 years' decorated service, including specialist qualifications as a Mine Warfare and Clearance Diving Officer. He has worked globally within both government and industry, and excelled across a diverse range of military command roles including assuming leadership of Australia's first operational maritime autonomous systems unit. Ryan co-founded The Whiskey Project Group with Darren Schuback in 2019 and currently has responsibility for Group-wide operations.



# THE WHISKEY PROJECT GROUP

**NAIAD**  
4WD OF THE SEA

  
THE WHISKEY PROJECT

 **YWE**  
YAMBA WELDING & ENGINEERING



[thewhiskeyproject.com.au](http://thewhiskeyproject.com.au)

[thewhiskeyprojectgroup.com](http://thewhiskeyprojectgroup.com)

